

Document Pack

**Democratic Services Section
Chief Executive's Department
Belfast City Council
City Hall
Belfast
BT1 5GS**



24 May 2013

MEETING OF TOWN PLANNING COMMITTEE
(To which all Members of Council are invited to attend.)

Dear Alderman/Councillor,

The above-named Committee will meet in the Lavery Room (Room G05), City Hall on Thursday, 30th May, 2013 at 4.30 pm, for the transaction of the business noted below.

You are requested to attend.

Yours faithfully

PETER McNANEY

Chief Executive

AGENDA:

1. **Routine Matters**
 - (a) Apologies
 - (b) Declarations of Interest
2. **Roads Service - Programme of Works: Spring 2013 (Pages 3 - 68)**

This page is intentionally left blank

EASTERN DIVISION

Report to

BELFAST CITY COUNCIL

Spring 2013



transport



Department for
**Regional
Development**

www.drdni.gov.uk



**INVESTORS
IN PEOPLE**

CONTENTS	PAGE
FOREWORD BY DIVISIONAL ROADS MANAGER	5
1.0 INTRODUCTION	7
2.0 STRATEGIC ROAD IMPROVEMENTS	15
2.1 York Street Interchange Scheme	16
2.2 A2 Sydenham Bypass Improvement Scheme	17
2.3 A55 Knock Road Widening	18
3.0 NETWORK DEVELOPMENT	19
3.1 Minor Works	20
3.2 Bus Measures	20
3.3 Maintenance of Structures	21
3.4 Belfast On The Move	25
4.0 NETWORK TRAFFIC AND STREET LIGHTING	29
4.1 Collision Remedial Schemes	30
4.2 Traffic Schemes	30
4.3 Pedestrian Measures	32
4.4 Safer Routes to School	33
4.5 Traffic Signs	34
4.6 Carriageway Markings	36
4.7 Legislation	38
4.8 Disabled Parking Bays	39
4.9 Street Lighting	41
4.10 Cycle Measures	43
4.11 Traffic Calming	44
4.12 Car Parking	45
4.13 Residents' Parking	46
5.0 NETWORK TRANSPORT TELEMATICS	49
5.1 Network Transport Telematics	50
6.0 NETWORK MAINTENANCE	53
6.1 Carriageway Resurfacing	54
6.2 Footway Resurfacing	56
6.3 Drainage	58
6.4 Carriageway Refurbishment	59
6.5 Public Realm	60
6.6 Liaison with Utilities	61
7.0 NETWORK PLANNING	63
7.1 Adoptions	64
7.2 Planning Applications	66

FOREWORD BY THE DIVISIONAL ROADS MANAGER



Bertie Ellison
Divisional Roads Manager



Roy Spiers
Deputy Divisional Roads Manager

Members of Belfast City Council

I am very pleased to present this report to council members. The report highlights the work completed in the Belfast City Council area last year (2012/13) and it outlines what we intend to do during this financial year (2013/14).

2012/13 was another challenging year for all staff within Roads Service. There was over £100m invested in structural maintenance, improving the road infrastructure across Northern Ireland in the last financial year. Within Eastern Division we spent £23.3m on this activity which amounted to 53% of our budget. The report outlines the number of schemes completed in the Belfast City Council area including the current phase of Belfast on the Move works, known as the Sustainable Transport Enabling Measures (STEM) which is now substantially complete. In addition following a Ministerial Announcement in December 2012 outlining the preferred option for the York Street Interchange, work has commenced on scheme design and preparation of Statutory Orders.

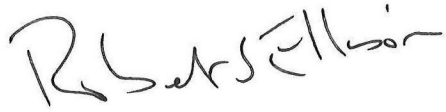
The winter of 2012/13 was severe and prolonged and within Eastern Division there was 97 call-outs this year, using around 14771 tonnes of salt, at a cost of just under £13.5k per call-out to treat all roads on the salting schedule. The Division completed 88% of winter salting actions by 07.30 hours and our total winter service expenditure was £1.480m.

For 2012/13 the Division as a whole received 5974 written enquiries with 95.7% of these responded to within the 15 day timescale. In addition 122 written complaints were received during this period and 94.3% were responded to within the set deadline.

Turning to the proposed programme for the 2013/14 financial year the Division's programme of work within the Belfast area includes safer routes to schools schemes in progress at Ligoniel Primary School and Saint Vincent de Paul Primary School Ligoniel Road, with further schemes programmed for Finaghy Primary School, Finaghy Road South, Greenwood Primary School and Bloomfield Collegiate School, Upper Newtownards Road.

I am pleased to present this report to council members.

I look forward to our meeting on 30th May.

A handwritten signature in black ink that reads "Bertie Ellison". The signature is written in a cursive style with a large initial 'B'.

Bertie Ellison
Divisional Roads Manager
Eastern Division
'Hydebank'
4 Hospital Road
Belfast BT8 8JL

1.0 INTRODUCTION

The Eastern Division is one of 4 Divisions within Roads Service. It spans the local Council areas of Belfast, Carrickfergus, Castlereagh, Lisburn, Newtownabbey and North Down. (See Fig.1 below)

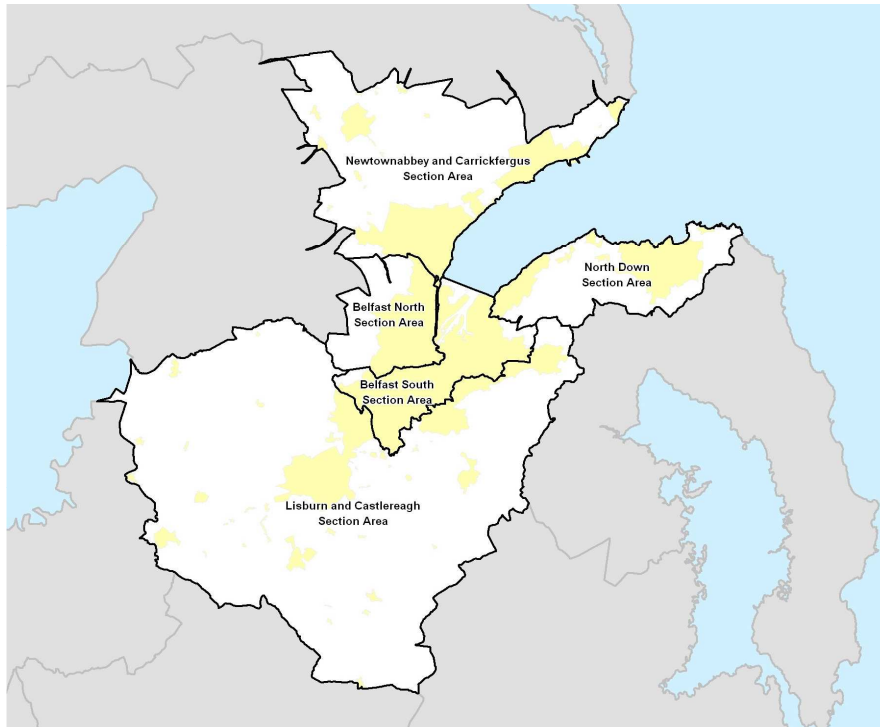


Figure 1 – Eastern Division and Council Areas

Eastern Division is part of the overall structure of Roads Service (see figure 2 below) which is based on separate business units for those who order services (clients) and for those who provide services (Roads Service Consultancy and Roads Service Direct).

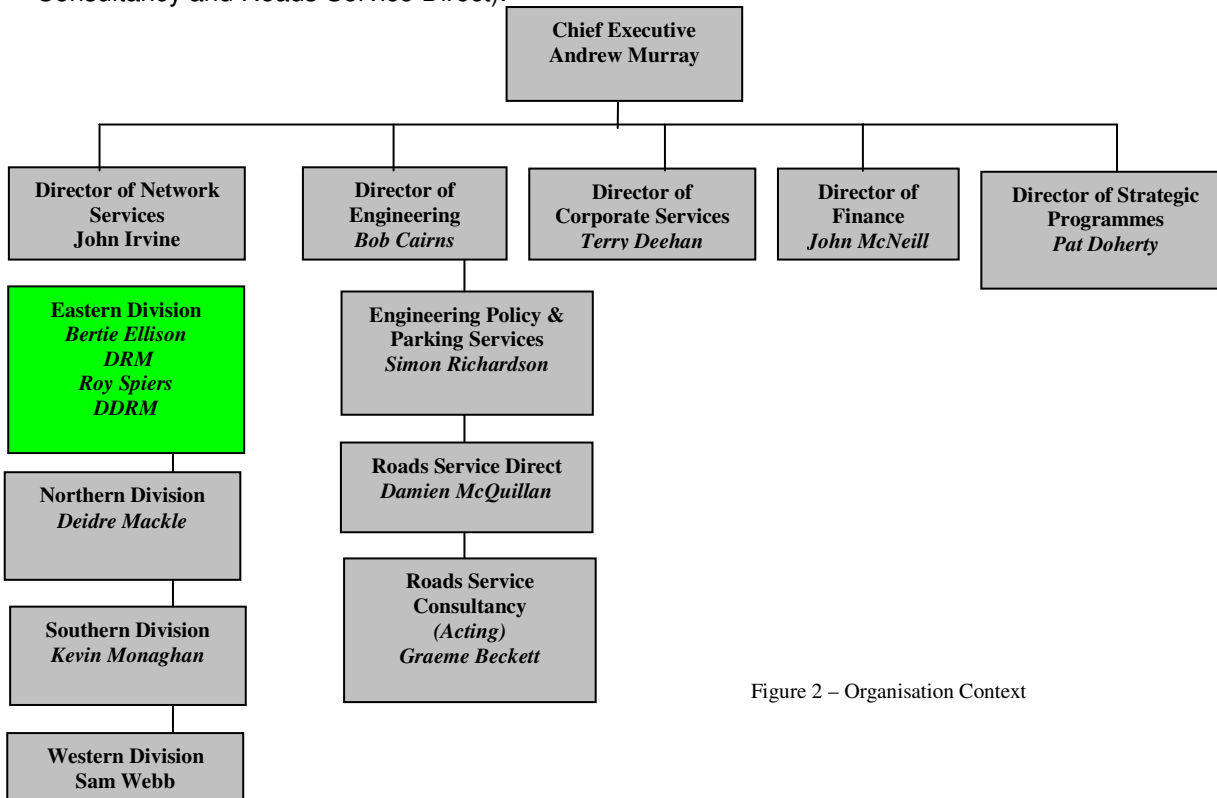


Figure 2 – Organisation Context

Eastern Division Management Structure



Bertie Ellison (9025 3001) bertie.ellison@drdni.gov.uk
Divisional Roads Manager



Norman Chambers (9025 3006) norman.chambers@drdni.gov.uk

Network Traffic and Street Lighting

Traffic Management minor improvements, pedestrian priority, traffic orders, signing, collision remedial schemes, Street Lighting, resident and disabled parking, car parks and pay and display spaces, cycling and traffic calming.



Philip Robinson (9025 3080) philip.robinson@drdni.gov.uk

Network Planning

Development Control, Private Streets and Transport Assessments



Brian Maxwell (9025 4500) brian.maxwell@drdni.gov.uk

Network Transport Telematics

Traffic signal control, operation of the Traffic Information and Control Centre, Traffic and travel information and European projects INSTANT and STREETWISE.



Attracta Tremers (9025 3036) attracta.tremers@drdni.gov.uk

Business Support

Financial control, land acquisition and disposal, retained human resources, building management and office supplies, council reports, business plan and communications.



Roy Spiers (9025 3002) roy.spiers@drdni.gov.uk
Deputy Divisional Roads Manager



Basil Hassard (9025 3272) basil.hassard@drdni.gov.uk

Strategic Route Improvements

Developing and progressing Strategic Highway Improvements within Eastern Division.



Stephen Pollock (9025 3071) stephen.pollock@drdni.gov.uk

Network Development

Minor works programme, maintenance and strengthening of structures, QBC & bus priority, 'Park and Ride schemes, Forward Planning, BoTM, and BRT infrastructure delivery.

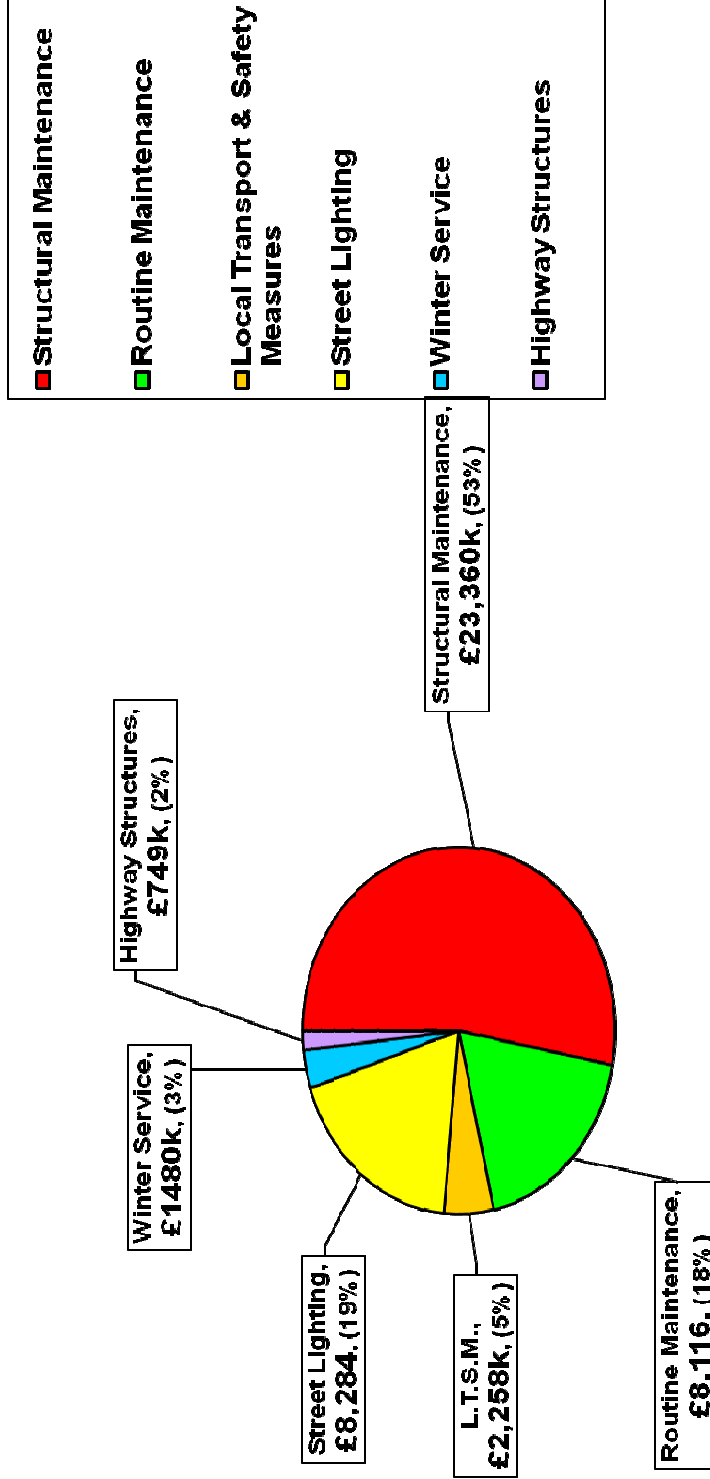


Colin Sykes (9025 3111) colin.sykes@drdni.gov.uk

Network Maintenance

Maintenance of adopted roads and footways including inspections, resurfacing, drainage, grass cutting and weed control, winter gritting and liaison with the utility companies.

Eastern Division 2012/13 Expenditure Profile (up to end of March 2013)



NB: Figures provided are Eastern Division's provisional outturn, which are subject to Audit before finalisation

Belfast City Council area – Key Statistics

Roads infrastructure	Eastern Division	Belfast City Council area
Length of public road (km)	3549	880
Length of footway (km)	3849	1516
Number of bridges	667	161
Number of street lights	108213	38826
Number of car parks	78	33
Number of car parking spaces	5809	2621

WHAT WE DO

Maintaining the road network

Structural maintenance

Maintaining the network in a safe and serviceable condition remains one of our highest priorities.

Structural maintenance includes:

- The resurfacing and surface dressing of roads and footways
- The repair of surface defects, such as potholes and broken flagstones
- The replacement and repair of road gullies, culverts and manholes

Within the Eastern Division area in 2012/13 we:

- Invested over £23.3 million on structural maintenance
- resurfaced 122 lane kilometres of the road network
- resurfaced 43 km of footways

Condition of the network

Monitoring the condition of our road network is an essential part of planning maintenance work and, in order to detect deterioration at an early stage, we undertake a number of annual road condition surveys using specialist vehicles to measure the strength, surface condition and skidding resistance of our roads.

In 2012/13 70% of the motorway and 79% of trunk road network had a residual life of more than 5 years compared to a target of 70% and 60% respectively. The information from the survey gives us an indication of areas of the road network which require further investigation and are likely to require maintenance.

Routine maintenance

Routine maintenance is important, both to enhance user safety and to help prevent more significant and costly maintenance problems building up over time.

In Eastern Division during 2012/13 we:

- invested around £5.4million replacing road markings, cutting grass verges to maintain visibility, emptying gullies and maintaining or replacing safety barriers, maintenance of street trees, verges and fences.
- repaired 55,520 road defects following inspections. 95.1% of serious road surface defects were repaired or made safe by the end of the day following the day of detection against a target of 94%.

Managing the road

We manage the road network to promote its safety and efficient operation. We have continued to make use of the latest technology and traffic management techniques to improve road safety, provide facilities for all road users, and effectively manage the network. This has included:

- Monitoring and management of traffic signal timings
- Responding to at least 97% of urgent traffic signal faults within 24 hours
- The use and extension of traffic control and monitoring systems
- The promotion and introduction of Puffin crossings
- The provision and management of motorway control systems
- The provision of accurate and reliable traffic information to the public

Within Eastern Division during 2012/13 we:

- Carried out further enhancements to the Motorway Control system to ensure its continued robustness.
- Incorporated priority for buses into 7 traffic signalised junctions
- Upgraded a further 11 pedestrian crossings to enable remote monitoring of the crossings for faults.
- Provided pre-trip information on the trafficwatch website, www.trafficwatchni.com, radio broadcasts and our traffic information telephone line 08457123321. Social media feeds – Twitter and SMS added to the website.

Winter Service

The aim of winter service is to help, as far as possible, main road traffic to move safely and freely in wintry conditions by spreading salt at the most effective times.

This winter was severe and prolonged and in order to accommodate these challenges, Eastern Division, has a fleet of 22 gritters and over 100 personnel available to salt approximately 1,239km of main roads.

There were approximately 97 call-outs this year, using around 14771 tonnes of salt, at a cost of just under £13.5k per call-out to treat all roads on the salting schedule. Eastern Division completed 88% of winter salting actions by 07.30 hours exceeding the target of 75%.

Our total winter service expenditure was £1.480m.

Emergency Response Service

We have procedures in place to assist with roads related emergency incidents to ensure a response, 24 hours a day, 7 days a week.

Our emergency response procedures are supported by a well established reporting System to gather operational information from across Northern Ireland during an Emergency. A lead communicator is available out of hours all year round to ensure that the latest news on road conditions is available to the travelling public and we have enhanced the trafficwatch website to enable the lead communicator to keep this information updated including Social Media System and Twitter.

Development Control and Private Streets

Development Control staff act as consultee to DOE Planning, providing advice on road safety, traffic progression, transportation, roads layout/standards and policy compliance.

During the 2012/13 financial year, Eastern Division dealt with over 3165 planning application consultations and processed an average 82% of these within 15 working days. (A 70% return is the target set in the Service Level Agreement with Planning Service).

In relation to new housing developments, 22km of Private Streets have been determined in 2012/13. This means that when and if the streets are built to the agreed layout and standard they will be adopted into the public roads network.

101 new sites have started since April 2012 representing approximately 8km of new roads and footways. At 31 March 2013 we held £37.1M in bonds, and during 2012/13, £4.5M bonds were processed with £4.8M released on adoption.

Street Works

Our road network is a major public asset valued at over £32 billion. It accommodates a network of underground pipes and cables which deliver key services to the public including water supply, waste water disposal, electricity, gas and telecommunications.

Utility companies have the right to open the public road to place or maintain their equipment. In 2012/13 there were 46840 utility company road openings across Northern Ireland, with some 19050 in Eastern Division. We work closely with utility companies to minimise disruption caused by street works and ensure better quality reinstatements.

Our Inspectors in Eastern Division have carried out over 5718 visits to streetworks sites to inspect work in progress and completed reinstatements.

Improving the Road Network

Major Road Improvements

Following the recent court ruling on the proposed A5 Road Scheme, the Minister along with the Executive are considering the financial impact of the ruling and the impact on future schemes.

In the meantime, work is progressing on two schemes, the A8 between Belfast and Larne, and the A2 Shore Road Greenisland.

The Budget for the period to 2015 will allow development work to continue on a range of other major projects which are important priorities. Delivery of these schemes is dependent on funding levels envisaged through the Investment Strategy for Northern Ireland 2011-21.

Within Eastern Division there is currently one road scheme under construction.

- A2 Shore Road Greenisland – Work commenced on site on 5 March 2013 and was shortly followed by the Sod Cutting Ceremony on 21 March 2013. Scheme completion is expected in summer of 2015.

Within Eastern Division there are currently three road schemes being developed. These are the York Street Interchange, the A55 Knock Road and the A2 Sydenham Bypass.

- York Street Interchange - Following the Ministerial Announcement of the Preferred Option for the York Street Interchange on 6 December 2012, work is continuing on scheme design and preparation of the Statutory Orders.
- A55 Knock Road - Roads Service published the Notice of intention to Proceed and the Direction Order in September 2012 following the completion of a Departmental Statement. Work is ongoing to ensure that this scheme can be progressed should additional funds become available.
- A2 Sydenham Bypass – the preferred option for the scheme was published in February 2010. Scheme development work is ongoing.

The commencement of construction for the York Street Interchange, the A55 Knock Road and the A2 Sydenham Bypass will depend on the satisfactory completion of an economic assessment, completion of the statutory process and the availability of funding levels envisaged through the Investment Strategy for Northern Ireland 2011-21, including any reallocation of funding following the A5 court ruling.

Bridge Strengthening

Roads Service regularly inspects its stock of bridges and other structures on the public road network.

Last year across Eastern Division we inspected 254 structures and carried out maintenance and repair work to 45 bridges and culverts. In 2012/13 we also spent £749k on strengthening or upgrading 6 bridges, including Queen Elizabeth Bridge, Boyne Bridge, St Brides underpass, Ormeau Bridge, Oagles Bridge and Dee Street Bridge.

Local Transport and Safety Measures

In 2012/13 we spent over £2.2 million on a range of measures to improve the safety and efficiency of the road network. In Eastern Division this included implementation of:

- 7 Minor Works improvement schemes
- 20 Traffic management schemes
- 4 Collision Remedial measures at specific sites
- 6 Traffic Calming measures;
- 13 Footway schemes and other improvements for pedestrians;
- 2.25kms of new cycle facilities
- 8 Safer Routes to School;
- 6 Controlled Pedestrian Crossings
- Improvements to the trafficwatch website and the motorway control system as well as continuously ongoing work to improve the performance of our traffic signals and pedestrian controlled crossings.

Street Lighting

We provide and maintain street lighting on all adopted roads in urban areas and in certain circumstances, on rural roads.

In 2012/13 we spent £4.2 million installing new and maintaining existing lighting systems in Eastern Division. This excludes the energy costs which were £3.89 million.

Street lights are inspected every 2 weeks in winter and every 4 weeks in summer to identify any outages. In the council area, the rate of outages is 1%, which is within our target of keeping 98% of street lights working.

Customer Service

Roads Service aims to inform, consult and involve customers by:-

- supplying up-to-date information through our publications, at shows and exhibitions and our website <http://www.drni.gov.uk/index/roadsni-3.htm> and;
- listening to customer needs; and
- remaining open, transparent and visible at all times.

We publish a wide range of information leaflets on specific road schemes and on the services we provide. Our free newspaper, "On the Move", is published twice a year and distributed through our local offices and public libraries.

We provide up-to-date travel news through our travel information website www.trafficwatchni.com and our traffic hotline for Greater Belfast on 08457 123321. Traffic information is updated at 10 minute intervals and broadcast on BBC Radio Ulster during peak times.

During the development phase of major roads projects, we consult with a wide range of stakeholders, including elected representatives and the public and, particularly, those likely to be directly affected by the works. We hold exhibitions at local venues and inform the public through press articles, leaflet drops and individual visits, as necessary.

During 2012/13 we received 5974 written enquiries from the general public and responded to 95.7% of these within 15 days.

2.0 STRATEGIC ROAD IMPROVEMENTS

Principal Engineer acting DDRM – Roy Spiers(9025 3129) roy.spiers@drdni.gov.uk

He is supported by the following staff:

Strategic Road Improvement 1 – Colin Pentland (ext 53212)
colin.pentland@drdni.gov.uk



Colin is responsible for progressing development of the York Street Scheme and is supported by Colin McBurney (ext 53016)

Strategic Road Improvement 2 – Basil Hassard acting Principal Engineer (9025 3272)
basil.hassard@drdni.gov.uk



Basil is responsible for development of the A2 Shore Road dual carriageway scheme, the M1 / A1 Link at Sprucefield and the Sydenham By-pass scheme. Basil is supported by Bobby Murray (ext 53232).

2.1 YORK STREET INTERCHANGE SCHEME

The Westlink / York Street junction is a key link on the Strategic Road Network that presently connects Westlink and the M2 and M3 motorways through a complex traffic signal controlled gyratory system, which also connects with the local road network. This arrangement (and its high traffic usage) causes significant congestion and long delays, particularly at peak times. The recent improvements to the M1/Westlink and M2 Motorway also mean that traffic is now being delivered much more quickly to this junction.

In March 2009, Roads Service completed the Preliminary Options Report, which assessed six options to grade separate the Westlink / York Street junction and provide direct links between Westlink and the M2 and M3 motorways. The Report recommended that four preliminary options be taken forward for further detailed consideration at the next stage of development, the Stage 2 Scheme Assessment. This work included a public consultation event into the scheme options at the Ramada Encore Hotel, Belfast.

A Ministerial Announcement was made on the 6 December 2012 outlining the Preferred Option for the York Street Interchange at an event in the Ramada Encore Hotel. This event was attended by a number of elected representatives and key stakeholders. Following this announcement, work has commenced on scheme design and preparation of the Statutory Orders.

The proposal to upgrade the Westlink / York Street junction is being considered as part of the new Investment Strategy for Northern Ireland. The timescale for construction of the new junction will be dependent upon the successful completion of the necessary statutory procedures, an economic appraisal and the provision of funding through the normal budgetary processes.



Preferred Option to improve York Street Interchange

2.2 A2 SYDENHAM BYPASS IMPROVEMENT SCHEME

The A2 Sydenham Bypass is one of the most heavily trafficked carriageways in the Belfast Metropolitan Area and forms a vital section of the strategic highway network, linking Bangor and Belfast. The road also provides access to the key gateways of George Best Belfast City Airport, Belfast Port and to several large residential areas. The proposed scheme will widen a 2.5km stretch of the existing A2 Sydenham Bypass from a dual 2-lane carriageway to a dual 3-lane carriageway.

The scheme is currently in the third stage of a three stage assessment process. Stage 1 focused on identifying the environmental, engineering, economic and traffic advantages and disadvantages, as well as the constraints associated with broadly defined improvement strategies. This concluded in the selection of the Proposed Corridor in May 2008. In Stage 2, a detailed assessment of a range of options within the Proposed Corridor was considered. This concluded in the selection of the Preferred Option in February 2010. Stage 3, currently underway, involves detailed assessment of the Preferred Option and ongoing consultation with key stakeholders. This will result in the publication of the Statutory Orders; the draft Direction Order, Environmental Statement and Notice of Intention to Make a Vesting Order.

The budget for the period to 2015 will allow development work on stage 3 to continue. Progression of the scheme beyond this is subject to the satisfactory outcome of the statutory process and future years funding.

2.3 A55 KNOCK ROAD WIDENING

The public inquiry for this scheme was held in November 2010. The Inspectors' report, received in March 2011, made a number of recommendations and Roads Service carried out further traffic surveys and assessments in consideration of the report. The Inspectors' report and a response to the Inspectors' recommendations has now been considered and included in the Departmental Statement. The Notice of Intention to Proceed and the Direction Order were published in September 2012

The Department proposes to proceed with the scheme, however, there is no funding identified for its implementation before 2015. While funding has not been identified, this is one of several schemes which Roads Service continues to progress to a procurement ready position should additional funding become available.



A55 Knock Road eastbound (existing)



A55 Knock Road eastbound (proposed)

3.0 NETWORK DEVELOPMENT

Principal Engineer – Stephen Pollock (9025 3071) stephen.pollock@drdni.gov.uk

He is supported by the following staff:

Works and Structures - David Grills (9025 3153)
david.grills@drdni.gov.uk

This team is responsible for major works, minor works and Structures.



Bus Priority - Harry Armstrong (9025 3022)
harry.armstrong@drdni.gov.uk

This team is responsible for delivery of the Quality Bus Corridor (QBC) programme, other bus priority measures and park and ride.



Forward Planning Team 2- Heather Bradley (9025 3164)
heather.bradley@drdni.gov.uk

This team is responsible for the development of schemes on The strategic and non-strategic route network through route improvement studies.

It is also developing and progressing the management of the Belfast on the Move Transport Masterplan proposals for Belfast City Centre and is a point of contact for Belfast Metropolitan Area Plan inquiries, Noise Mapping Study and Regeneration Initiatives.



3.1 MINOR WORKS**2012/13 Progress Report**

No Minor Works schemes are currently programmed. Councillors are invited to suggest improvement schemes for consideration

3.2 BUS MEASURES**2012/13 Progress Report**

<i>Scheme</i>	<i>Status</i>
Bus Shelters –there are no further bus shelters available through the Roads Service Contract with Adshel. A new contract will be awarded in 2015.	Complete
Hannahstown Hill Bus Turning Circle –Facility to permit an extension of Metro bus services.	Work substantially complete – to become operational July 2013
East Bridge Street to May Street –With-flow bus lane – Change in hours of operation to 7am-7pm Mon-Sat.	To become operational by end of May 2013
Castlereagh Street – widening near Albertbridge Road junction to facilitate a more efficient traffic flow and assist bus reliability. Detailed design complete.	Subject to funding, this scheme may progress to implementation this year.
City Centre – various bus priority measures have been implemented in the city centre as part of the Belfast On The Move scheme.	Ongoing

BUS MEASURES**2013/14 Programme of Works**

<i>Scheme</i>	<i>Status</i>
Black's Road Park & Ride –Extension to P&R site to accommodate approximately 30 additional cars.	Under investigation and subject to funding.
Castlereagh Street – widening near Albertbridge Road junction to facilitate a more efficient traffic flow and assist bus reliability. Detailed design complete.	* May be implemented this financial year, subject to funding.

* carried forward from 2012/13 Programme

3.3 MAINTENANCE OF STRUCTURES

2012/13 Progress Report

Scheme	Status
Principal Inspections	
Bridge No 20134 – Dee Street Bridge	Completed
Bridge No 20179 – Bridge End Flyover	Completed
Bridge No 20197 – Cairnburn Flyover	Completed
Bridge No 20226 – Glen Road at Glen River	Completed
Bridge No 20235 – Falls Park Bridge	Completed
Bridge No 20248 – Donegall Road at City Hospital	Completed
Bridge No 20269 – Gilnahirk Road	Completed
Bridge No 20336 – Fortwilliam Arch 1 and Pillar 5	Completed
Bridge No 20337 – Fortwilliam Arch 2 and Pillar 6	Completed
Bridge No 20338 – Fortwilliam Pillars 3 and 4	Completed
Bridge No 20339 – Fortwilliam Pillars 1 and 2	Completed
Bridge No 20128 – York Road (Confined Space)	Deferred to 2013/14*
Bridge No 20139 – Ballysillan Road (Confined Space)	Deferred to 2013/14*
Bridge No 20142 – Springfield Road (Confined Space)	Deferred to 2013/14*
Bridge No 20144 – Shore Road Culvert (Confined Space)	Deferred to 2013/14*
Bridge No 20185 – Newtownards Road / Connswater (Confined Space)	Deferred to 2013/14*
Bridge No 20194 – A2 Belfast Road (Confined Space)	Deferred to 2013/14*
Bridge No 20205 – Newtownards Road (Confined Space)	Deferred to 2013/14*
Bridge No 20331 – Stockmans Way (Confined Space)	Deferred to 2013/14*
<i>*Confined space inspections deferred awaiting availability of specialist resources</i>	

Scheme	Status
Concrete / Composite Structures	
Bridge No. 20171 - Queen Elizabeth Bridge. Concrete repairs to substructure, cathodic protection and repainting.	Completed
Bridge No. 20169 - Boyne Bridge. Waterproofing, replacement of bridge joints on deck and protection of weak footway slabs.	Completed
Bridge No. 20332. Bridge End Subway. Environmental improvements and community art project.	Completed
Bridges Nos. 20191, 92, 93. Tillysburn Subways. Concrete and parapet repairs.	Completed
Bridge No 20134. Dee Street Bridge. Parapet Replacement and Repairs	Ongoing
Bridge No. 20169 - Boyne Bridge. Repair to steelwork, repainting and spalled concrete on soffit of deck	Deferred to 2013/14
Steel Structures	
Bridge No. 20222. Lislea Avenue footbridge. Metalwork repairs	Completed
Bridge No. 20251. Lower Windsor Avenue footbridge. Metalwork repairs	Completed
Bridge No. 20242. Fane Street footbridge. Painting and reapplication of anti slip following fire damage.	Substantially Complete.
Bridge No 20250. Tate's Avenue (Railway Span). Repainting of beams	Deferred to 2013/14.
Masonry Structures	
Bridge No 20255 – Ormeau Bridge. Repairs to Arches	Completed
Antrim Road near Kinraig Park. Repairs to masonry wall adjacent to carriageway	Completed
Bridge No 20220. Old Shaws Bridge. Vegetation removal and masonry repair	Partially complete
Bridge No. 20248. Donegall Road at City Hospital Railway Bridge. Repair to masonry parapet	Ongoing
Ben Madigan Heights. Construction of new retaining wall	Ongoing

MAINTENANCE OF STRUCTURES

2013/14 Programme of Works

Scheme	Status
Principal Inspections	
Bridge No 20128 – York Road (Confined Space)	Programmed
Bridge No 20139 – Ballysillan Road (Confined Space)	Programmed
Bridge No 20142 – Springfield Road (Confined Space)	Programmed
Bridge No 20144 – Shore Road Culvert (Confined Space)	Programmed

<i>Scheme</i>	<i>Status</i>
Bridge No 20185 – Newtownards Road / Connswater (Confined Space)	Programmed
Bridge No 20194 – A2 Belfast Road (Confined Space)	Programmed
Bridge No 20205 – Newtownards Road (Confined Space)	Programmed
Bridge No 20331 – Stockmans Way (Confined Space)	Programmed
Bridge No – 20124 - East Bridge Street (Carriageway Span)	Programmed
Bridge No 20126 - East Bridge Street (Accomodation Span)	Programmed
Bridge No 20129 - Sunningdale Park	Programmed
Bridge No 20135 - Islandbawn Street / Clowney River	Programmed
Bridge No 20138 - Mill Avenue	Programmed
Bridge No 20140 - Forthriver Road	Programmed
Bridge No 20157 - Deacon Street Culvert	Programmed
Bridge No 20171 - Queen Elizabeth Bridge	Completed
Bridge No 20174 - Station Street Flyover	Programmed
Bridge No 20183 - Ballymacarrett Railway Arch	Programmed
Bridge No 20185 - Newtownards Rd / Connswater	Programmed
Bridge No 20189 - Sydenham Bypass Footbridge	Programmed
Bridge No 20190 - Tillysburn Rail Bridge	Programmed
Bridge No 20195- North Road Bridge	Programmed
Bridge No 20198 - Belmont Park Footbridge	Programmed
Bridge No 20203 - Stoney Road. [A]	Programmed
Bridge No 20204 - Stoney Road. [B]	Programmed
Bridge No 20205 - Newtownards Road	Programmed
Bridge No 20222 - Lislea Avenue Footbridge	Programmed
Bridge No 20234 - Blacks Road Rail Bridge	Programmed
Bridge No 20238 - Stockmans Lane North	Programmed
Bridge No 20246 - Donegall Road Railway Bridge at Roden Street	Programmed
Bridge No 20247 Abingdon Street Footbridge.	Programmed
Bridge No 20251 - Lower Windsor Avenue Footbridge	Programmed
Bridge No 20252 - Lisburn Road / University Road	Programmed
Bridge No 20253 - Botanic Avenue	Programmed
Bridge No 20254 - Ormeau Road Rail Bridge	Programmed
Bridge No 20256 - Kings Bridge	Programmed

Scheme	Status
Bridge No 20260 - Loop Bridge	Programmed
Bridge No 20262 - Bells Bridge	Programmed
Bridge No 20265 - Sandown Road	Programmed
Bridge No 20267 - Knock Rd Culvert	Programmed
Bridge No 20333 - Forthriver Primary School	Programmed
Bridge No 26720 - Wellington Place Signal Gantry	Programmed
Bridge No 26730 - Donegall Sq North Signal Gantry	Programmed
Bridge No 26735 - Ann Street Signal Gantry	Programmed
Bridge No 26750 - York St. Signal Gantry 1	Programmed
Bridge No 26760 - York St. Signal Gantry 2	Programmed
Bridge No 26770 - York St. Signal Gantry 3	Programmed
Bridge No 26780 - M3 Northbound Sign Gantry	Programmed
Bridge No 27065 - Middlepath Street Gantry	Programmed

Scheme	Status
Concrete / Composite Structures	
Bridge No 20134. Dee Street Bridge. Parapet Replacement and Repairs	Ongoing
Bridge No. 20169 - Boyne Bridge. Repair to steelwork, repainting and spalled concrete on soffit of deck	Deferred to 2013/14
Steel Structures	
Bridge No 20250. Tate's Avenue (Railway Span). Repainting of beams	Programmed
Masonry Structures	
Bridge No. 20248. Donegall Road at City Hospital Railway Bridge. Repair to masonry parapet	Ongoing
Ben Madigan Heights. Construction of new retaining wall	Ongoing
Antrim Road near Ben Madigan Park. Repairs to Retaining Walls	Programmed

3.4 BELFAST ON THE MOVE

BELFAST ON THE MOVE

The current phase of the Belfast on the Move works, known as the Sustainable Transport Enabling Measures (STEM), are now substantially complete.

The aim of Belfast on the Move is to make the city centre more accessible to everyone. To achieve this we need to create a city centre where public transport is given a much higher priority and the streets are designed to meet the needs of the wider community.

Belfast on the Move is one element of the move to more sustainable travel which also includes the development of additional Park & Ride spaces and the provision of additional rail capacity to provide an attractive alternative for car drivers.

The STEM proposals have provided:

- The re-routing of northbound through traffic from Great Victoria Street onto Hope Street and Durham Street with south bound traffic continuing to use Great Victoria Street.
- The redistribution of existing road space in city centre streets to provide extensive bus priority measures for use by public transport, taxis and cyclists. About 2.6km of new bus lanes are now operational across the city centre, operating from 7am to 7pm on Monday to Saturday.
- 20 new controlled pedestrian crossing points;
- 320m of new dedicated service bays;
- 0.8km of new dedicated cycle lanes; and
- over 40 additional dedicated disabled parking bays.

Prior to the start of the works about 30,000 vehicles per day travelled through the city centre on the streets in front and behind the City Hall. About 60% of this was 'through traffic' in that it did not have a city centre destination. To address this we need to have fewer cars in the city centre and make travel by public transport, walking and cycling more attractive.

- In October/November 2012 Metro passenger journeys had increased by around 1,500 per day compared to October/November 2011. Buses are getting through the city centre more quickly and services are more reliable.
- Bus based Park & Ride facilities serving Belfast have seen a marked increase in usage, on average 15% for September and October 2012.
- A survey on Donegall Square South has shown that 40 – 50% of people travelling by road at peak times are in a bus, whilst only 10% of the vehicles on the road are buses (single day survey)

The proposals are not anti car, but over 40% of households in Belfast alone do not have access to a private car and rely on public transport. Approximately 40% of people use the bus, walk or cycle to get into the city centre in the morning peak hour. Yet, the road network caters primarily for cars.

Details of the proposals and the current position regarding the works are available through the 'Belfast on the Move' website at

www.drndi.gov.uk/index/belfastonthemove.htm.

Bus Lane in May Street at Junction with Donegall Square East



Bus lane in Fisherwick Place / College Square East



Since January of this year, work has now been completed in the following locations:

- Great Victoria Street (from Hope Street to Grosvenor Road) and Fisherwick Place - alterations to traffic islands, resurfacing, the provision of a northbound bus lane and the provision of loading and parking bays;
- Grosvenor Road from Durham Street to Great Victoria Street - resurfacing and the provision of a single city bound general traffic lane and a cycle lane. Two lanes retained westbound;
- College Avenue and College Square East - road widening to provide a southbound bus lane and a right turn traffic lane to College Square North. Resurfacing carried out on the north and southbound carriageways;
- Victoria Street – introduction of a southbound cycle track from Chichester Street to Gloucester Street;
- College Square North, Durham Street and Grosvenor Road – resurfacing and reconfiguration of parking in College Square North;
- Donegall Square East – introduction of a new bus lane. This restricts movement from Donegall Square East into Adelaide Street to buses, taxis, motorcycles and cycles only between 7am and 7pm Monday to Saturday.

Work is currently underway in;

- Wellington Place, Donegall Square North and Chichester Street - lane reallocation and introduction of a bus lane. This work is scheduled to be substantially completed by the end of May.

4.0 NETWORK TRAFFIC AND STREET LIGHTING

Principal Engineer – Norman Chambers (9025 3006) norman.chambers@drdni.gov.uk

He is supported by the following staff:

Traffic Management 1 - Roy Gordon (9025 3007)

roy.gordon@drdni.gov.uk



This team deals with traffic improvement schemes in Carrickfergus, Newtownabbey and Belfast.

Traffic Management 2 - Graeme Salmon (9025 3026)

graeme.salmon@drdni.gov.uk



This team deals with traffic improvement schemes in Lisburn, Castlereagh and North Down and collision remedial schemes in all council areas.

Traffic Management 3 - Paul King (9025 3029)

paul.king@drdni.gov.uk



This team is responsible for residents' parking, development of car parking, cycle measures and traffic calming.

Street Lighting - David Wright (9025 3057)

david.wright@drdni.gov.uk



This team is responsible for Street Lighting, traffic bollards and the illumination of signs.

4.1 COLLISION REMEDIAL SCHEMES**2012/13 Progress Report**

<i>Scheme</i>	<i>Status</i>
Crumlin Road / Ballyutoag Road – high friction surfacing and enhanced signing	In progress
Knock Road / Kings Road – fully controlled right turn signals (additional to programme)	Completed

COLLISION REMEDIAL SCHEMES**2013/14 Programme of Works**

<i>Scheme</i>	<i>Status</i>
East Bridge Street at Central Station – high friction surface on approaches to the Pelican crossing	Programmed
Andersonstown Road / Kennedy Way Roundabout – high friction surface on the approaches	Programmed
Crumlin Road / Ballyutoag Road – high friction surfacing and enhanced signing	In progress

4.2 TRAFFIC SCHEMES**2012/13 Progress Report**

<i>Scheme</i>	<i>Status</i>
Belmont Road through village – limited waiting parking	In Progress
Bridge End at M3 off-slip– pedestrian facilities	Completed
Crumlin Road / Ligoniel Road – right turn filter	Completed
Dublin Road at Marcus Ward Street – central island	Completed



Dublin Road at Marcus Ward Street

Great Victoria Street at Downshire Place – erection of bollards	Completed
Whiterock Road – channelisation scheme	Completed



Whiterock Road

TRAFFIC SCHEMES

2013/14 Programme of Works

<i>Scheme</i>	<i>Status</i>
Belmont Road through village – limited waiting parking	In Progress
Springfield Road – upgrade of zebra crossing	Programmed

4.3 PEDESTRIAN MEASURES

2012/13 Progress Report

<i>Scheme</i>	<i>Status</i>
Quality Walking Corridor. Grosvenor Road – City centre to Falls Road including zebra relocation	Completed
Quality Walking Corridor. Donegall Road	Completed
Antrim Road at Fortwilliam Park – additional controlled pedestrian phase across Fortwilliam Park	In Progress
Beechmount Avenue near St Roses High School – pedestrian crossing	Completed



Beechmount Avenue

Connsbrook Avenue at Strandburn Street – pedestrian crossing	Completed
Dock Street/Garmoyle Street – pedestrian facilities and corner improvement	Completed
Ladas Drive / Alexander Road – pedestrian facilities	Completed
Malone Road – dropped kerb scheme	Completed
Oldpark Road near Oldpark Terrace – pedestrian crossing	In Abeyance
Oldpark Road near Manor Street – pedestrian crossing	In Progress
Sandy Row at Maxwell Street – extension of footway build-outs	Completed
Sunningdale Gardens – dropped kerbs	Completed
Victoria Street/Chichester Street – toucan crossing	Completed

PEDESTRIAN MEASURES**2013/14 Programme of Works**

<i>Scheme</i>	<i>Status</i>
Antrim Road at Fortwilliam Park – additional controlled pedestrian phase across Fortwilliam Park	In Progress
Lisburn Road at Cranmore Park – puffin crossing	Programmed
Oldpark Road near Manor Street – pedestrian crossing	Completed



Oldpark Road

Oldpark Road at Oldpark Avenue – upgrade zebra crossing to puffin crossing	Programmed
Springfield Road at Cupar Street - upgrade zebra crossing to puffin crossing	Programmed
Stranmillis Road at roundabout – zebra crossing upgrade	Programmed
Upper Newtownards Road – dropped kerb scheme	In Progress

4.4 SAFER ROUTES TO SCHOOLS**2012/13 Progress Report**

<i>Scheme</i>	<i>Status</i>
Dominican College, Fortwilliam Park	Completed



Fortwilliam Park

Ligoniel Primary School, Ligoniel Road	In Progress
Saint Vincent de Paul Primary School, Ligoniel Road	In Progress

SAFER ROUTES TO SCHOOLS

2013/14 Programme of Works

<i>Scheme</i>	<i>Status</i>
Finaghy Primary School, Finaghy Road South	Programmed
Greenwood Primary School and Bloomfield Collegiate School, Upper Newtownards Road	Programmed
Ligoniel Primary School, Ligoniel Road	In Progress
Saint Vincent de Paul Primary School, Ligoniel Road	In Progress

4.5 TRAFFIC SIGNS

2012/13 Progress Report

<i>Scheme</i>	<i>Status</i>
Abbey Road at Abbey Gardens – 'Give Way' sign	Completed
Antrim Road at Jubilee Avenue – Urban Clearway sign	Completed
Bedford Street near Ormeau Avenue – 2 no. Urban Clearway signs	Completed
Belfast City centre – various locations for Streets Ahead Project	Completed

Scheme	Status
Divis Street at Westlink off-slip – direction sign	In Progress
Donegall Quay at multi-storey car park – ‘One Way’ sign	Completed
Exchange Street West – 6 no. signs for the ‘Metropolitan Arts Centre’	Completed
Howard Street South – 3 no. Limited Waiting signs	Completed
Knock Road at Upper Newtownards Road – Advance direction sign	In Progress
Lincoln Avenue at Antrim Road – ‘No Through Road’ sign	Completed
Marlborough Park South (near Lisburn Road) - 1 no. Mon-Sat 8am – 6pm no waiting time plate	Completed
Orby Street – Monday to Saturday 8am – 6pm no waiting time plate	Completed
Park Avenue at Victoria Park – 4 no. sections pedestrian guard rail	Completed
Queen’s Bridge – 2 no. advance direction signs and 2 no. laning signs	Completed



Queen’s Bridge

Seaview Drive – ‘Children Crossing’ sign and ‘School’ plate	In Progress
Sydenham By-Pass, Hawthornden Way, Parkway and Upper Newtownards Road – 14 no. Ulster Hospital signs	Completed
Woodstock Link near Halcombe Street – 2 no. Limited Waiting signs	Completed

TRAFFIC SIGNS**2013/14 Programme of Works**

<i>Scheme</i>	<i>Status</i>
Traffic signs will be provided as required	

4.6 CARRIAGEWAY MARKINGS**2012/13 Progress Report**

<i>Scheme</i>	<i>Status</i>
Agincourt Street at Rugby Avenue – 2 no. corner restrictions	Completed
Antrim Road at Carlisle Circus – ‘Turn Left’ arrow and alterations to road markings on roundabout	Completed
Antrim Road at Grey’s Lane – relay edge of carriageway road markings	Completed
Antrim Road at Jubilee Avenue – 2 no. corner restrictions	Completed
Agincourt Avenue at Southview Street, Palistine Street and Jerusalem Street – corner restrictions	Completed
Beechmount Avenue at Beechmount Grove – 2 no. corner restrictions	Completed
Belmont Road (near Ballymiscaw Road) – 2 no. ‘Slow’ road markings	Completed
Botanic Avenue at Bible College – alterations to parking bays	Completed
Botanic Avenue at College Green – 2 no. corner restrictions	Completed
Cameronian Drive at Houston Gardens – new centre line	Completed
Cavandish Street at Crocus Street and Hawthorn Street – corner restrictions	Completed
Cavehill Road at Westland Road – corner restriction	Completed
College Park and University Square – ‘Keep Clear’ marking and 2 no. corner restrictions	Completed
Crumlin Road on approach to Ardoyne roundabout – 7 no. hazard road markings	Completed
Cregagh Road near Harding Memorial Primary School – corner restriction	Completed
Coolmoyle Park at North Circular Road – ‘Give Way’ road marking	Completed



Coolmoyle Park

Dee Street near Sydenham By-Pass – new lane markings	Completed
Dock Street – new road markings	Completed
Donegall Quay near Queens Square – realignment of markings	Completed
Donegall Quay at multi storey car park – new road markings	Completed
Downview Avenue at Innifayle Road – ‘Give Way’ road marking and centre line on Downview Avenue	Completed
East Bread Street – ‘Give Way’ marking	Completed
Glen Road – 3 no. sections of pedestrian guard rail	Completed
Glenside Park – ‘Give Way’ road marking	Completed
Grosvenor Road at Servia Street – 2 no. corner restrictions	Completed
Knocknagoney Road at Tillysburn junction – new guide lines	In Progress
Lindsay Street – corner restriction near Park	Completed
Lisburn Road at Fire Station – ‘Keep Clear’ road marking	Completed
Music Hall Lane – waiting restrictions (double yellow lines)	Completed
Newtownards Road near Belvoir Street – ‘I’ bar road marking	Completed
Norbury Street at Norfolk Drive – 2 no. ‘Give Way’ road markings	Completed
North Derby Street - waiting restrictions (double yellow lines)	Completed
Oldpark Road near Torrens Avenue – ‘SLOW’ road marking	Completed
Orby Link at Castlereagh Road – corner restriction	Completed
Ravenhill Park Gardens – Turn left arrow	Completed

<i>Scheme</i>	<i>Status</i>
Ravensdene Park Gardens – ‘Give Way’ and turn right arrow	Completed
River Terrace – waiting restrictions in turning circle and ‘Keep Clear’ marking	Completed
Seaview Drive – 3 no. ‘School Keep Clear’ road markings	Completed
Solway Street at Newtownards Road – corner restriction	In Progress
Springvale Gardens at Springvale Drive – central hazards and edge of carriageway markings	Completed
Springfield Road near Falls Road – limited waiting	In Progress
Stockman’s Lane – 2 no. ‘Keep Clear’ road markings	Completed
Upper Newtownards Road near Greenwood Avenue – extension to zig zag markings	Completed
Walnut Street at Walnut Mews – 2 no. corner restrictions	Completed
Westlink at Clifton Street off-slip – road markings and arrows	Completed
Woodstock Link at Halcombe Street – limited waiting road markings	Completed
Woodstock Link/Woodstock Place – 6 no. corner restrictions	Completed

CARRIAGEWAY MARKINGS

2013/14 Programme of Works

<i>Scheme</i>	<i>Status</i>
Carriageway markings will be provided as required	

4.7 LEGISLATION

2012/13 Progress Report

<i>Scheme</i>	<i>Status</i>
WAITING RESTRICTIONS	
North Derby Street – At Any Time	Completed
Mulhouse Road – At Any Time	In Progress
Music Hall Lane – At Any Time	Completed
Ormeau Road (McClure Street to Donegall Pass) – At Any Time	In Progress

Scheme	Status
Woodstock Link (in lay-bys) – Limited Waiting	Completed
TRAFFIC ORDERS	
Holylands area – one way traffic system	In Progress

LEGISLATION**2013/14 Programme of Works**

Scheme	Status
WAITING RESTRICTIONS	
Nelson Street – limited waiting	In Progress

4.8 DISABLED PARKING BAYS**2012/13 Progress Report**

Scheme	Status
42 Blythe Street, Belfast	Completed
3 City Walk, Belfast	Completed
44 Pertoria Street, Belfast	Completed
36 Ponsonby Avenue, Belfast	Completed
56 Ulsterville Gardens, Belfast	Completed
37 Wallasey Park, Belfast	Completed
25 Glenveagh Drive, Belfast	Completed
27 Inverary Avenue, Belfast	Completed
13 Dromore Street, Belfast	Completed
16 Eastleigh Crescent, Belfast	Completed
80 Willowbank Gardens, Belfast	Completed
50 Fairhill Park, Belfast	Completed

<i>Scheme</i>	<i>Status</i>
36 Ponsonby Avenue, Belfast	Completed
24 Ponsonby Street, Belfast	Completed
41 North Parade, Belfast	Completed
13 Windsor Road, Belfast	Completed
51 Willowfield Parade, Belfast	Completed
41 Willowfield Parade, Belfast	Completed
60 River Terrace, Belfast	Completed
13 Elm Street, Belfast	Completed
17 Hillview Avenue, Belfast	Completed
33 Larkfield Gardens, Belfast	Completed
250 Ravenhill Avenue, Belfast	Completed
Disabled parking bays to be removed	
23 Pomona Avenue, Belfast	Completed
1 Glencairn Crescent, Belfast	Completed
95 Benmore Drive, Belfast	Completed
13 Dromore Street, Belfast	Completed
1 Chichester Avenue, Belfast	Completed
28 Parkmount Gardens, Belfast	Completed
44 Ashley Avenue, Belfast	Completed
40 Ashley Avenue, Belfast	Completed
32 Ulsterville Gardens, Belfast	Completed
3 The Mount, Belfast	Completed
97 The Mount, Belfast	Completed
95 Larkfield Road, Belfast	Completed
Delaware Street, Belfast	Completed

DISABLED PARKING BAYS**2013/14 Programme of Works**

<i>Scheme</i>	<i>Status</i>
Application for 'disabled' parking bays will be assessed on an individual basis as they are received	

4.9 STREET LIGHTING**2012/13 Progress Report**

<i>Scheme</i>	<i>Status</i>
College Park Avenue	*Programmed
Summerhill Avenue	*Programmed
Ava Street	Completed
Delhi Street	Completed
Kerrsland Crescent / Parade / Drive	Completed
Kirkliston Gardens	Completed
Holland Crescent	Completed
Abbetta Parade	Completed
Greenville Road	In Progress
Osbourne Gardens	*Programmed
Governors Bridge	*Programmed
Florenceville Drive	*Programmed
Oldpark Road	Completed
Crumlin Road	*Programmed
Forthriver Road	*Programmed
Rosapenna Street	In progress
Halidays Road	*Programmed
Ventry Street	*Programmed
Jamacia Road	Programmed
Manor Street	Programmed

<i>Scheme</i>	<i>Status</i>
Cliftonville Road	Programmed
Glenside Park	Programmed
Shannon Street / Summer Street	Programmed

* carried over from 2011/12 Programme

STREET LIGHTING

2013/14 Programme of Works

<i>Scheme</i>	<i>Status</i>
College Park Avenue	*Programmed
Summerhill Avenue	Completed
Greenville Road	Completed
Osbourne Gardens	*Programmed
Governors Bridge	*Programmed
Florenceville Drive	*Programmed
Forthriver Road	In progress
Rosapenna Street	Completed
Halidays Road	*Programmed
Ventry Street	*Programmed
Jamacia Road	Completed
Manor Street	In progress
Cliftonville Road	In progress
Glenside Park	Completed
Shannon Street	In progress
Dargan Crescent	In progress
Balmoral Link / Road	In Progress
Boucher Crescent	In progress

<i>Scheme</i>	<i>Status</i>
Upper Kennedy Way	Programmed
Glen Road	Programmed
Suffolk Road	Programmed
Ormonde Gardens	Programmed
Willisfield Park / Gardens / Avenue	Programmed
Wedderburn Park / Gardens / Avenue	Programmed
Rathmore Park / Gardens	Programmed
Falls Road (Whiterock Road – PSNI station)	Programmed
Falls Road (Whiterock Road – Broadway)	Programmed
Glen Ober Park	Programmed
Duncairn Gardens / Broughham Street	Programmed
New Barnsley Park / Crescent	Programmed
Glenalina Road	Programmed
Glenside Parade	Programmed
Distillery Street	Programmed
Duncrue Road	Programmed

* carried over from 2012/13 Programme

4.10 CYCLE MEASURES

2012/13 Progress Report


<i>Scheme</i>	<i>Status</i>
Albertbridge Road – cycle lanes and cycle track.	2013/14 Programme
Fane Street – Wheeling ramps.	2013/14 Programme
Ormeau Bridge – Re-profiling at National Cycle Network Toucan crossing.	Completed.
University Square contra flow lane for cyclists.	Completed.
Apsley Street – Contra flow lane for cyclists.	2013/14 Programme

CYCLE MEASURES**2013/14 Programme of Works**

<i>Scheme</i>	<i>Status</i>
Albertbridge Road – cycle lanes and cycle track.	*Programmed.
Fane Street – Wheeling ramps.	*Programmed.
Apsley Street – Contra flow lane for cyclists.	*Programmed.
Ravenhill Road (slip Road) at Albertbridge Road Junction – Road Hump.	Programmed.

*Carried over from 2012/13 programme.

4.11 TRAFFIC CALMING**2012/13 Progress Report**

<i>Scheme</i>	<i>Status</i>
Connsbrook Avenue – Traffic calming scheme	2013/14 Programme.
Cranmore Park Area – Traffic calming scheme	Completed.
	

TRAFFIC CALMING**2013/14 Programme of Works**

<i>Scheme</i>	<i>Status</i>
Connsbrook Avenue – Traffic calming scheme	*Will be reviewed in September 2013 and decision will be made on whether to proceed or not.
Ligoniel Road – Traffic calming scheme	Programmed. Consultative and legislative process to commence in May 2013.

*Carried over from 2012/13 Programme.

It should be noted that all Traffic Calming schemes are subject to a legislative process and to the availability of funding before they can proceed.

The legislative process provides for representations / objections to be received on our proposals. Where residents do not support individual schemes or where objections are received, it may not be possible to deliver our intended programme. In this event substitutions, on a Division-wide basis, may be made throughout the financial year.

4.12 CAR PARKING**2012/13 Progress Report**

<i>Scheme</i>	<i>Status</i>
Increases to existing Charged Car Parking.	<p>Off- Street Parking.</p> <p>Tariffs were introduced to the formerly free cars below on 6 July 2012:</p> <ul style="list-style-type: none"> • Ashdale Street • Marlborough Avenue <p>New tariffs were introduced in the following charged car parks on 23 June 2012:</p> <ul style="list-style-type: none"> • Eastside • Great George's Street (York St 2) • Northside • Station Street

<i>Scheme</i>	<i>Status</i>
Car park operations.	All of the previously kiosk operated car parks were converted between November 2012 and April 2013 to Pay and Display operations.

CAR PARKING

2013/14 Programme of Works

<i>Scheme</i>	<i>Status</i>
Provision of additional On-Street Pay and Display spaces as identified.	The Council will be formally advised when the consultation process commences.
Review of our off and on-street parking charges.	Following the Executive's announcement on 8 November 2012 car parking charges in towns and city centres will be frozen at current levels until at least 2015.
Car Park Maintenance	On-going maintenance will continue to be undertaken to our off-street car parks as required.

4.13 RESIDENTS' PARKING

We carried out a consultation exercise in the Lower Malone area in November 2012 which received a sufficient level of community support to allow us to begin preparations to proceed to the more formal legislative stage, which we anticipate will take place later this year.

Discussions with the residents' and business associations in the Stranmillis area are continuing with the aim of implementing a scheme. We had hoped this scheme could have progressed in parallel with that of the Lower Malone area, but unfortunately, the local traders within Stranmillis did not support the proposals that were agreed with the residents' association, despite their earlier involvement in the scheme development.

Traders have recently formed a formal association and we are currently awaiting details of its preferred arrangement for the proposed scheme. We will then attempt to broker agreement between the residents' and business associations and if this is achieved over the summer period, we would then hope to informally consult within the area in October 2013, when the new university year starts.

We have also re-engaged with local representatives of the Donegall Pass and Sandy Row areas and feedback, at this stage, has been encouraging. Following representation received on behalf of residents in the Rugby Road/College Park Avenue area, we have also surveyed and developed a scheme for that area. We plan to consult informally in all three areas, after the summer period.

5.0 NETWORK TRANSPORT TELEMATICS

Principal Engineer – Brian Maxwell (9025 4500) brian.maxwell@drdni.gov.uk

He is supported by the following staff:

Declan Murphy (9025 4536) declan.murphy@drdni.gov.uk
This team is responsible for the day to day running of the Traffic Information and Control Centre. It is responsible for the installation, maintenance and operation of Intelligent Transport Systems (ITS) including traffic control on the urban and motorway networks and the provision of traffic and travel information.



Damien King (9025 4529) damien.king@drdni.gov.uk
This team has specific responsibilities for issues of Road Safety including the development of the Road Safety Engineering Report and the establishment of Central Road Safety Unit. It is also responsible for compiling traffic census, vehicle kilometre travel surveys and managing the road works website.



TICC's TrafficwatchNI website



M1 / A12 Westlink Managed Route

NETWORK TRANSPORT TELEMATICS 2012/13 Progress Report

<i>Scheme</i>	<i>Status</i>
TRAFFIC AND TRAVEL INFORMATION	
<p>The TrafficwatchNI website will be enhanced to include better mapping and Road Works Information. We will also investigate the benefits of incorporating social media feeds.</p> <p>Subject to adequate funding the coverage of electronic variable message signs (VMS) will be enhanced on the strategic and/or urban networks.</p>	<p>Complete. Social media – Twitter and SMS launched by the Minister on 13 March 2013.</p> <p>Subject to funding, M2 foreshore identified as priority for upgrade of existing VMS.</p>
PELICAN CROSSINGS	
<p>The Remote Monitoring System (RMS) enables TICC to monitor the operation of pelican crossings from the Control Centre.</p> <p>Subject to adequate funding RMS coverage will be extended to the following 11 crossings in Belfast;</p> <ul style="list-style-type: none"> • Andersonstown Road at Stockman's Lane • Antrim Road At Baltic Avenue • Antrim Road at Cedar Avenue • Antrim Road at Chichester Road • Antrim Road at Salisbury Avenue • Antrim Road at Serpentine Road • Antrim Road at Willowbank Gardens • Belmont Road at Bathgate Drive 	<p>Completed</p> <p>Completed</p> <p>Completed</p> <p>Completed</p> <p>Completed</p> <p>Completed</p> <p>Completed</p> <p>Completed</p>
<ul style="list-style-type: none"> • Belmont Road at Belmont Church Road • Belmont Road at Wandsworth Gardens • Glen Road at Christian Brothers School 	<p>Completed</p> <p>Completed</p> <p>Completed</p>
URBAN CLOSED CIRCUIT TELEVISION (CCTV) CAMERAS	
<p>Review CCTV coverage to ensure its continued adequacy and identify camera locations that are in need of upgrade.</p>	<p>Ongoing</p>
TRAFFIC SIGNALS	

<p>We will monitor traffic signal timings to ensure they are appropriate for the prevailing traffic conditions and subject to adequate funding we will upgrade traffic signal equipment where necessary.</p>	<p>Ongoing</p>
<p>MOTORWAY COMMUNICATIONS AND CONTROL</p>	
<p>Utilise TICC's motorway communications & control infrastructure together with CCTV traffic monitoring facilities to efficiently manage traffic on motorways and the Westlink.</p> <p>Investigate possible enhancements to the Motorway Control Instation system.</p> <p>Audit Motorway Intelligent Transport infrastructure for continued health and safety access compliance.</p> <p>Investigate possible improvements to M1 traffic flow both approaching and leaving the city</p>	<p>Ongoing</p> <p>Completed. Areas for enhancement identified to ensure continued robustness.</p> <p>Completed. Some sites identified for improved access arrangements.</p> <p>Ongoing</p>
<p>BUS PRIORITY</p>	
<p>Subject to adequate funding, extend Bus traffic light priority to include the Holywood Road in Belfast.</p>	<p>No progress as no funding available.</p>
<p>JOURNEY TIME MEASUREMENT</p>	
<p>Subject to adequate funding, extend coverage of Journey Time estimation cameras to provide travel times for Road Users on strategic routes serving Belfast.</p>	<p>No progress as no funding available.</p>
<p>CENTRAL ROAD SAFETY UNIT</p>	
<p>This unit will continue to have a strategic overview of road safety and the analysis of collision data on roads across the Province.</p> <p>Install 2 permanent traffic counting sites.</p>	<p>Ongoing</p> <p>Delayed due to procurement issues.</p>

NETWORK TRANSPORT TELEMATICS 2013/14 Programme of Works

<i>Scheme</i>	<i>Status</i>
TRAFFIC AND TRAVEL INFORMATION	
We will continue to enhance the trafficwatchni website and improve our social media facilities as appropriate.	Ongoing
Subject to adequate funding, the M2 foreshore Variable Message Signs (VMS) will be upgraded to ensure their continued robustness.	Programmed
URBAN CLOSED CIRCUIT TELEVISION (CCTV) CAMERAS	
Review CCTV coverage to ensure its continued adequacy and identify camera locations that are in need of upgrade.	Ongoing
TRAFFIC SIGNALS	
We will monitor traffic signal timings to ensure they are appropriate for the prevailing traffic conditions and subject to adequate funding we will upgrade traffic signal equipment where necessary.	Ongoing
MOTORWAY COMMUNICATIONS AND CONTROL	
Utilise TICC's motorway communications & control infrastructure together with CCTV traffic monitoring facilities to efficiently manage traffic on motorways and the Westlink.	Ongoing
CENTRAL ROAD SAFETY UNIT	
This unit will continue to have a strategic overview of road safety and the analysis of collision data on roads across the Province.	Ongoing
Subject to adequate funding, install 2 permanent traffic counting sites.	Programmed

6.0 NETWORK MAINTENANCE

Principal Engineer – Colin Sykes (9025 3111) colin.sykes@drdni.gov.uk

He is supported by the following staff:

Support Services Manager- Aidan O’Callaghan (9025 3098)

aidan.o'callaghan@drdni.gov.uk

This team is based at Hydebank and is responsible for general co-ordination, bidding, allocating and monitoring finances, maintenance of safety fences, contract monitoring, statistics and enforcement.



Belfast North Section Engineer – Brian O’Neill (9025 4044)

brian.oneill@drdni.gov.uk

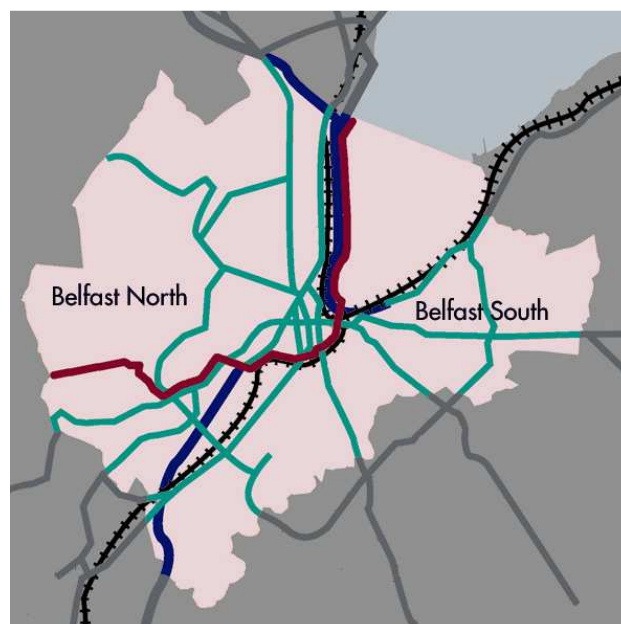
148 – 158 Corporation Street, Belfast, BT1 3DH
This team is responsible for contacts with the public and elected representatives, highway inspections, resurfacing, responsive repairs, routine maintenance, winter gritting, road opening consents and licences, public liability claims and liaison with the service utility companies.



Belfast South Section Engineer - Gareth McKibbin (9025 4609)

gareth.mckibbin@drdni.gov.uk

1a Airport Road, Belfast, BT3 9DY
(As Belfast North)



Network Maintenance

6.1 CARRIAGEWAY RESURFACING

2012/13 Progress Report

Scheme	Status
BELFAST SOUTH	
From April 2012 to March 2013, 18.12km of carriageway has been resurfaced in the Belfast South area. This equates to 69,600sqm and includes the schemes listed below.	
University Street – Ormeau Road to Botanic Avenue	Completed
Garnerville Road	Completed
Ormeau Road – Donegall Pass to Baroda Street	Completed
Kingsdale Park	Completed
Donegall Road – Broadway Roundabout to Euterpe Street	Completed
Kyle Street	Completed
Malone Road – University Road to Cadogan Park	*Completed
Ravenhill Road – St Judes Crescent to North Parade	*Completed
Strathern Park	*Completed
Sandbrook Park/ Gardens & Grove	*Completed
Ormeau Embankment	*Completed
Northlands Park	*Completed
Magdala Street	*Completed
Sandhurst Road	*Completed
BELFAST NORTH	
From April 2012 to March 2013, 8.62 km of carriageway has been resurfaced in the North Belfast area. This equates to approximately 77250 sqm and includes the completed schemes listed below.	
Ainsworth Avenue	*Completed
Antrim Road (Throne Bends)	*Completed
Ballymagarry Lane	*Completed
Ballymoney Street	*Completed
College Avenue	*Completed
Crumlin Road (Upper Hightown Road to Flush Road)	*Completed
Crumlin Road (Ballysillan Park to Upper Hightown Road)	*Completed
Dargan Road	*Completed
Dock Street	Completed
Duncrue Road	*Completed

<i>Scheme</i>	<i>Status</i>
Garmoyle Street	Completed
Linfield Road	*Completed
Nelson Street	Completed
Whiterock Road	*Completed
May Street (Belfast on the Move)	Completed
Donegall Square South (Belfast on the Move)	Completed
Howard Street (Belfast on the Move)	Completed
Great Victoria Street (postponed to 2013/14 due to weather conditions)	Deferred to 2013/14

*Additional to 2012/13 programme

CARRIAGEWAY RESURFACING 2013/14 Programme of Works

<i>Scheme</i>	<i>Status</i>
BELFAST SOUTH	
Broomhill Park including Broomhill Park Central	Completed
Cloverhill Park/Gardens	Completed
Cricklewood Park	Completed
Belmont Road (Hawthornden Gardens to Massey Ave)	Ongoing
Finaghy Road South	Ongoing
Glen Road – Shaws Road to Suffolk Road	Programmed
Andersonstown Road Roundabout	Programmed
Ballymiscaw Road - Part	Programmed
Derlett Street	Programmed
BELFAST NORTH	
Alliance Road	Programmed
Great Victoria Street (Bruce Street to Grosvenor Road)	Programmed
High Street	Programmed
Springfield Road (Springfield Park to West Circular Road)	Programmed
Springfield Road (West Circular Road to Watermouth Street)	Programmed
Westland Road (Old Westland Road to Oldpark Road)	Programmed

6.2 FOOTWAY RESURFACING

2012/13 Progress Report

<i>Scheme</i>	<i>Status</i>
BELFAST SOUTH	
From April 2012 to March 2013, 6.7km of footway has been resurfaced in the Belfast South area. This includes the schemes listed below.	
University Street – Ormeau Road to Botanic Avenue	Completed
Garnerville Road	Completed
Kingsdale Park	Completed
Ormonde Park – Upton Park – Upton Avenue	Completed
Moveen House/ Moylena House	Completed
Barnetts Road – Part	Cancelled
Queen’s Quay - Part	Completed
Kyle Street	Completed
Strathern Park	*Completed
Sandbrook Park/ Gardens & Grove	*Completed
Northlands Park	*Completed
Magdala Street	*Completed
Dunraven Park	*Completed
Finaghy Cross Roads - Part	*Completed
BELFAST NORTH	
From April 2012 to March 2013, 5.67km of footway has been resurfaced in the North Belfast Belfast area. This includes the completed schemes listed below.	
Ainsworth Avenue	*Completed
Antrim Road (Throne Bends)	*Completed
Blackmountain Way	Completed
Cliftonville Avenue	*Completed
Coombehill Park	Completed
Divis Drive	*Completed

<i>Scheme</i>	<i>Status</i>
Joanmount Park	*Completed
Linfield Road	*Completed
Prestwick Park	Completed
Mileriver Street	*Completed
Mountcollyer Close	*Completed
Mountcollyer Street	*Completed

*Additional to 2012/13 programme

FOOTWAY RESURFACING

2013/14 Programme of Works

<i>Scheme</i>	<i>Status</i>
BELFAST SOUTH	
Broomhill Park including Broomhill Park Central	Completed
Cloverhill Park/Gardens	Completed
Cricklewood Park	Completed
Belmont Road (Hawthornden Gardens to Massey Ave)	Ongoing
Finaghy Road South	Ongoing
Glen Road – Shaws Road to Suffolk Road	Programmed
Derlett Street	Programmed
BELFAST NORTH	
Britton's Drive	Programmed
Britton's Parade	Programmed
Westland Estate	In progress
Whiterock Crescent	Programmed
Whiterock Drive	Programmed
Glencollyer Street	In progress
Crosscollyer Street	In progress

6.3 DRAINAGE

2012/13 Progress Report

<i>Scheme</i>	<i>Status</i>
BELFAST SOUTH	
Upper Lisburn Road at Kingsway	Completed
Finaghy Road North	Completed
Station Road	Completed
Sydenham By-Pass	Completed
Rosepark	Completed
Great Northern Street	Completed
Belmont Road	Completed
BELFAST NORTH	
Cromac Street	Completed
Ormeau Avenue	Completed
Shaftesbury Square	Completed
Upper Cavehill Road	*Completed
Fairhill Walk	*Completed
Cromac Street	*Completed
Iris Grove	*Completed
Nelson Street	*Completed
Gransha Green	*Completed
Norfolk Road	*Completed
Norfolk Gardens	*Completed
Blythe Street	*Completed
Westland Road	*Completed
Springvale Park	*Completed
Belfast Foundry pots replaced throughout Section with trapped gullies and hinged lids	Completed

*Additional to 2012/13 programme as documented in Spring Report

DRAINAGE**2013/14 Programme of Works**

<i>Scheme</i>	<i>Status</i>
BELFAST SOUTH	
Diamond Gardens	Programmed
BELFAST NORTH	
Shore Road at Forwilliam Park	Programmed
Shore Road at Whitewell Road lay-by	Programmed
Corporation Street at Corporation Square	Programmed
Upper Cavehill Road	Programmed
Garmoyle Street	Programmed
Ongoing replacement of Belfast Foundry pots as resource permits	Programmed

6.4 CARRIAGEWAY REFURBISHMENT**2012/13 Progress Report**

<i>Scheme</i>	<i>Status</i>
BELFAST SOUTH	
From April 2012 to March 2013, 5.06km of carriageway has been refurbished in the South Belfast area. This equates to approximately 18,900sqm and includes the completed schemes listed below.	
Cregagh Road – Part	Complete
Willowfield Avenue – Part	Complete
St. Judes Parade – Part	Complete
Stranmillis Road – Part	Programmed
Denewood Park – Part	Complete
Orangefield Road - Part	Complete
Stranmillis Embankment – King's Bridge to Southview Street	Complete
Newtownards Road at Albertbridge Road	Complete
Castlereagh Road – Wayland Street to Orby Link	Complete

<i>Scheme</i>	<i>Status</i>
Carlingford Street - Part	*Completed
Severn Street - Part	*Completed
Aitnamonagh Crescent	*Completed
Queen's Quay - Part	*Completed
University Road - Part	*Completed
Glen Road Roundabout	*Completed

BELFAST NORTH	
From April 2012 to March 2013, 1.7km of carriageway has been refurbished in the North Belfast area. This equates to approximately 5500sqm and includes the completed schemes listed below.	
Brianville Park	*Completed
Dunlambert Drive	*Completed
Dunlambert Gardens	*Completed
Dunlambert Park	*Completed
Moyard Park	*Completed
North Derby Street	*Completed

6.5 PUBLIC REALM Streets Ahead Project (DSD)

2012/13 Progress Report

The first phase of The Belfast Streets Ahead project funded by DSD, which aimed to improve the public areas of Belfast City Centre came to an end in July 2012. This work involved the reconstruction of streets with granite paving, the provision of new street furniture, lighting, signs and landscaping and also included some public art and sculpture. Future maintenance of these streets now rests with Roads Service.

Streets Ahead Project (DSD)

2012/13 Progress Report

<i>Scheme</i>	<i>Status</i>
BELFAST NORTH	
Bank Square proposals	2013/14 Programme

Streets Ahead Project (DSD)

2013/14 Programme of Works

<i>Scheme</i>	<i>Status</i>
Bank Square	Programmed

6.6 LIAISON WITH UTILITIES

2012/13 Progress Report

<i>Scheme</i>	<i>Status</i>
WATER SERVICE	
Roads Service staff will continue to work closely with NI Water and their Consultants on the major upgrade of NIW mains infrastructure throughout Belfast and in particular North Belfast.	In Progress
PHOENIX GAS	
No major infrastructure builds notified. Service connections for new customers are likely.	Ongoing
VIRGIN MEDIA	
No major infrastructure builds notified. Service connections for new customers are likely.	Ongoing
CABLE & WIRELESS	
No major infrastructure builds notified. Service connections for new customers are likely.	Ongoing
<i>Scheme</i>	<i>Status</i>
POWER NI	
No major infrastructure builds notified. Service connections for new customers are likely.	Ongoing
BT	
No major infrastructure builds notified. Service connections for new customers are likely.	Ongoing
EIRCOM	
No major infrastructure builds notified. Service connections for new customers are likely.	Ongoing

Scheme	Status
HIBERNIA ATLANTIC	
No major infrastructure builds notified. Service connections for new customers are likely.	Ongoing

LIAISON WITH UTILITIES**2013/14 Programme of Works**

Scheme	Status
WATER SERVICE	
Roads Service staff will continue to work closely with NI Water and their Consultants on the major upgrade of NIW mains infrastructure throughout Belfast and in particular North Belfast.	In Progress
PHOENIX GAS	
No major infrastructure builds notified. Service connections for new customers are likely.	In Progress
VIRGIN MEDIA	
No major infrastructure builds notified. Service connections for new customers are likely.	In Progress
CABLE & WIRELESS	
No major infrastructure builds notified. Service connections for new customers are likely.	In Progress
POWER NI	
No major infrastructure builds notified. Service connections for new customers are likely.	In Progress
BT	
No major infrastructure builds notified. Service connections for new customers are likely.	In Progress
EIRCOM	
No major infrastructure builds notified. Service connections for new customers are likely.	In Progress
HIBERNIA ATLANTIC	
No major infrastructure builds notified. Service connections for new customers are likely.	In Progress

7.0 NETWORK PLANNING

Principal Engineer – Philip Robinson (9025 3080) philip.robinson@drdni.gov.uk

He is supported by the following staff:

Development Control Team 1 – Sid Stevenson (9025 3588)

sid.stevenson@drdni.gov.uk

This team deals with development control for Belfast and Carrickfergus Council Areas. Sid is also responsible for private street determinations, bonds and adoption certificates for the Division.



Development Control Team 2- Colin Kelly (9025 3151)

colin.kelly@drdni.gov.uk

This team deals with development control for the Lisburn, and North Down Council Areas. Colin also provides specialist advice on development control issues.



Development Control Team 3 - Gabriel Doherty (9025 3154)

gabriel.doherty@drdni.gov.uk

This team deals with development control for Newtownabbey and Castlereagh Council areas. Gabriel also manages the review of Transport Assessments associated with planning applications and provides specialist advice in this area.



7.1 ADOPTIONS

Adoptions completed

Location	Length Adopted (M)
Abbeydale Court	Turning head extending from Abbeydale Gardens: 65m of footway and 37m of carriageway
Abetta Parade/Woodcot Avenue	25m of footway
Ballarat Street	15m of carriageway and 35m of footway
Belfast Road (A2)	A2 Belfast Road (East Side): 190m of combined footway and cycleway and 615m ² of planted verge. Knocknagoney Road North Side at West side of Shopping Centre: 12m of widened carriageway, 16m of footway and 75m ² of planted verge
Blackwood Street/Burmah Street	39m of footway
Boucher Road	Access to Charles Hurst Licence Site: 10m of traditional carriageway onto bellmouth entrance and 95m of widened footway/sightlines.
Cherryville Street	35m ² of new footway at rear of a newly created lay-by (accommodating 2 in no. Cars)
Cromac Place/Ormeau Road	75m of footway, 20m of carriageway and 48m of footway widening
Drinagh Manor	Drinagh Manor: 8 metres of traditional carriageway with 24 metres of footway plus 33 metres of shared surface carriageway with 103 metres of service strip. Kensington Road: 48 square metres of sight splay in grass.
Glenluce Walk	Laird Park: 117m of traditional carriageway with turning head and associated footways, 32m of footway and 30m ² of end on parking
Hallidays Road	38 square metres of footway at rear of lay-by, 28 metres of carriageway at cul-de-sac with 25 square metres of lay-by parking and 58 square metres of paved buffer strip
Ivan Street	66m of new footway plus a 0.2 metre wide strip at rear of new lay-by.
Jamaica Street	Jamaica Street: 9 metres of new turning head with 1.25 metre wide footway around. 75 square metres of carriageway and 49 square metres of footway at turning head.
Kingsdale Park	760 linear metres of footway. (Both sides of existing adopted carriageway).
Lavina Square	Lavinia Square: 465 metres of traditional carriageway with associated footways. Lavinia Mews: 16 metres of traditional carriageway with associated footways, plus 73 metres of shared surface carriageway with 2 metre wide service strip on each side. Ormeau Road: 227 square metres of widened footway for sight splay.
Loughview (Enforcement Site)	Crumlin Road: Widened footway and visibility splay at each side of new road entrance. Loughview Close: 192 metres of traditional carriageway with associated footways and speed control roundabout. Loughview Glen: 8 metres of traditional carriageway and footways plus 75 metres of shared

	<p>surface carriageway with turning head and 2m wide service strip.</p> <p>Loughview Meadows: 8 metres of traditional carriageway and footways plus 82, metres of share surface carriageway with 2 metres wide service strip.</p> <p>Loughview Manor: 4 metres of traditional carriageway with footways plus 70 metres of shared surface carriageway with turning head and 2 metre wide service strip.</p> <p>Loughview Heights: 4 metres of traditional carriageway with footways plus 81 metres of shared surface carriageway with turning head and 2 metre wide service strip.</p> <p>Loughview Green: 4 metres of traditional carriageway with footways plus 40 metres of shared surface carriageway with turning head and 2 metre wide service strip.</p> <p>Loughview Meadows: 4 metres of traditional carriageway with footways plus 70 metres of shared surface carriageway with turning head and 2 metre wide service strip.</p>
Maxwell Street/Place	6m of access carriageway and 15m of footway
Newforge Grange	40 linear metres of shared surface carriageway with 153 square metres of lay-by parking, 50 linear metres of service strip (2m wide) and 11.5 linear metres of footway.
Riverview Meadows (Enforcement Site)	143 metres of traditional carriageway and associated footways with 142 square metres of end on parking. Old Suffolk Road: 20 metres of footway
Riverview Ridge (Enforcement Site)	100 metres of traditional carriageway with extended turning head and 129 metres of footway plus 346 square metres of parking
Saint Mary's Gardens (Enforcement Site)	247 metres of traditional carriageway and associated footways with turning head and 72 square metres of lay-by parking. 1m wide service strip (in grass) surrounding central island
Springfield Meadows (Enforcement Site)	85 metres of traditional carriageway with associated footways plus 41 metres of shared surface carriageway with turning head.
Strathearn Lane	120 metres of traditional carriageway with associated footways and double turning head, plus 41 metres of shared surface carriageway with double turning head and 35 metres of service strip
Sydney Street West	97 square metres of new footway at rear of 2 no. New lay-by parking areas.
Torrens Avenue	Torrens Avenue: 314 square metres of footway Torrens Crescent: 232 square metres of footway
Tyndale Crescent	75m of traditional carriageway with turning head and associated footways
Wellington Square (Annadale Embankment)	Lower Courtyard (including alleyway to adjoin with College Drive): 110m of shared surface carriageway type construction. 160m ² of parking and 70m of back alley leading to College Drive Upper Courtyard: 150m of shared surface carriageway type construction plus 160m ² of parking. College Drive: 350m of traditional carriageway and associated footways with occasional planted verge. Lagan Way: 125m of traditional carriageway and footway. The North side of carriageway comprises service strip, override strip planted verge and a concrete "buffer strip" along the outside boundary of a pumping station. The Boulevard: 340m of traditional carriageway and footway with planted verges and occasional cycle path facility (160m on the South side). Riverside view: 280m of traditional carriageway, with 60m comprising traditional footways

	and 220m comprising planted verge and service strip type construction. Beech Heights: 165m traditional carriageway and footway with planted verges, service strip (North side) and cycle path facility (full length of South side). College Heights: 165m of traditional carriageway and footways with planted verges with cycle path facility (full length of North side)
--	--

7.2 PLANNING APPLICATIONS

DOE Planning already consults directly with the Council regarding planning applications which they receive in the Belfast Area. Roads Service Development Control teams advise DOE Planning on the roads and transportation issues associated with both major and minor planning applications.